

HSGA QUARTERLY

Published four times a year in Honolulu, Hawai'i
by The Hawaiian Steel Guitar Association

Volume 8, Issue 31

July/August 1993



Alan L. Akaka, President
Jerry Byrd, Vice President
Victor Rittenband, Secretary-Treasurer

BOARD OF DIRECTORS

George Lake, Canada
Frank Miller, Arizona
Vic Rittenband, Hawai'i
Beau Sterling, Illinois
Don Woods, Michigan

President Emeritus

Lorene Ruymar, Canada

STATEMENT OF PURPOSE

Hawaiian Steel Guitar Association is registered as a non-profit organization in the State of Hawai'i, and as a social organization under IRS tax code 501(c)(7). Its purpose is to develop a global communications network of players and lovers of Hawaiian traditional music as performed on all types of steel guitars and related instruments.

MEMBERSHIP

Open to all steel guitar players and non-players around the world who support the promotion and perpetuation of Hawaiian steel guitar music. Annual dues are US\$24. Membership year begins July 1. Members receive HSGA Quarterly, and other group benefits.

MAILING INFORMATION

Mail all correspondence and submissions to HSGA Quarterly to:
HSGA/Alan Akaka, P.O. Box 11373,
Honolulu, HI, 96828-1373, USA.
Phone (808) 533-6165
HSGA Quarterly is mailed by U.S. Bulk Permit to Hawai'i and US mainland; by "Printed Matter" classification to all non-U.S. addresses. Outside Hawai'i, please allow four to six weeks for delivery.



Alan Akaka received the "rites of passage" to HSGA presidency from Lorene, with a sprinkling of ice water (the champagne came later), a lei around his neck, and a kiss on both cheeks, during an afternoon session at the Queen Kapi'olani Hotel. As you can see, Alan returned at least part of the favor.

CONVENTION TIME IN HAWAI'I IS ALWAYS "NO KA 'OI"

HONOLULU HERE WE ARE!

Next to all the good music we hear at a convention, I think the most enjoyable part is meeting old friends and making new friends. The most exciting are the ones who came from distant lands. Imagine the number of hours spent traveling and the cost of the trip from: Germany - Rudolf Barten & Harald Szybalsky; England - Lionel Fletcher & Jess Bishop; Scotland - Mr. & Mrs. James Cathro. ("Pat & Arthur Jones from Wales were sorely missed", said quite a number of times); Switzerland - Pierre and Denise Berner and Georges & Jeannette Chatagny; New Zealand - Nola Beck, Mick Walker and Colleen Brennan, Doug Lomax, and Bruce Murray with a lady on each arm.

Boy, you can't beat those New Zealanders for good humor, enthusiasm, and youthful energy! On the first nights in Honolulu, we mainlanders would be dragging ourselves through the hotel lobby at 10:00 pm, way past our bedtime. We'd have to pass by the New Zealanders who were all bright-

eyed and bushy tailed, asking, "Where's the party? There should be some good music jamming starting about now, shouldn't there?" I think they get it from living "down there" where there's nobody else using up the oxygen, and from having their heads and feet pointed in the opposite direction to ours.

The Lei Day concert in the park was the opening event, so the whole gang showed up to see who else showed up. We had a great turn-out from the local Hawaiian steel players and back-up crew, as we always do. Big thanks to Kamaka Tom, Merle Kekuku, Randy Oness, John Auna, and Buddy Hew Len and his brother. That show is well worth doing. In fact the people who run the Carol Kai Bed Race asked if we'd provide some steel guitar music for their event next year. (Free, of course.) We'll have to make it a #1 project to contact all our young local steel guitarists and get them involved in these shows next year.

Continued pg. 2

"AX" HANDLES

The Business of HSGA President's Report

THANKS FOR YOUR CONFIDENCE! Last April, you were asked, via HSGA Quarterly, to mail a ballot to John DeBoe, by May 10, with your approval or disapproval for moving HSGA's assets to Hawai'i and having me, Alan Akaka, as your president. Seventy-six replies were received; seventy-two voted "yes" to both. Thank you! Two voted "not sure". We hope to shift that to a resounding "yes" by next April. Two voted "No." Can we talk? Your reasons may be very good ones. If you see a problem with HSGA being in Hawai'i, or me as HSGA's president, please write. Maybe together we can create a solution that works for all HSGA members.

MEMBERSHIP: "HSGA IS YOU". Corny reminder? Sure, but when you're out there having fun together in Hawai'i or Joliet or St. Louis, it's easy to forget. Just think, if you hadn't joined together, as HSGA, "together" could mean "several of us bumped into each other, last

month" or "my wife and I ran into in Honolulu, just by accident."

As we get things rolling, from our new headquarters in Hawai'i, we're preparing a lot more good reasons for you to want "together" to mean "my membership in the Hawaiian Steel Guitar Association". **HURRAY! 200+ of you HAVE already paid your 1993-'94, \$24 dues. What happened to the REST of our members?**

Why are you waiting? 1993-94 renewals were due last April, and this is your last issue of the Quarterly. It would be a shame to lose you now, just at the beginning of my new job as your president, because we're planning some "Members Only" good stuff, in the months ahead.

Please Do NOT wait until the Joliet Convention to pay your dues. A little bird in Bellingham tells me that some of you do. Frank and Donna Miller have enough to handle, and I won't be in Joliet to help. Besides, Marjorie Scott

(who's a real tightwad) says "Having to send reminder notices costs HSGA time and postage money, which comes from all the members who ARE paid up". See? She listens to me.

Starting now, membership cards will be newly issued each year. So I guess we all have to mend our ways. (To those of you who HAVE paid, "Mahalo", your cards are good until April 1994.) I really don't want this to be "goodbye", and have you dropped from HSGA's membership list, and lose your "togetherness" with other steel players, so —

**ARE YOU WITH US? YES? THEN, PLEASE MAIL YOUR '93-'94 \$24 DUES TODAY TO: MEMBERSHIP
HSGA/Alan L. Akaka
P.O. Box 11373,
Honolulu, HI 96828-1373
NOTE: ALL MAIL FOR HSGA, NOW COMES TO OUR HONOLULU P.O. Box. All mail and calls for Art and Lorene Ruymar, personally, go to: 2090 West 44th Ave., Vancouver, B.C. Canada V6M 2E9.
(604) 263-8944**

CONVENTION (continued from pg. 1)

This was the first year we played a concert at the Ala Moana Shopping Center, Centerstage. We had a huge audience that hung in there with us for the whole three hours. People who'd rather hear steel guitar than shop. Naaaah...YEEEEAH! The music was provided by mainland steel guitarists, until Alan Akaka surprised us by joining in. I did the M.C. job for the show, first time I've ever done it, and I enjoyed it immensely. Shall we do it again?

During our three days of music sharing in the Akala Room it seemed to me that the music quality was the best ever. There's obviously been some practicing and some improving going on while the snowbanks were piled high around our log cabin doors. Having the lunch served right there in the huge ballroom has to be a PLUS. You can get a lot of good visiting done in an hour and a half. No hotel in Waikiki offers us such a good deal. If we have lunch right there, there is NO CHARGE for the ballroom, which normally rents for over \$1,000 per day. The \$20.00 per day that we charge our members goes as \$15.00 for the lunch (tax and tips included) and \$5.00 for club expenses. See "Treasurer's Report" to find out how we made out.

On the Wednesday at noon, Alan Akaka played outdoors at the Royal Hawaiian Shopping Center, broadcast on KCCN. He asked Ivan Reddington, Art, and me to play a number each on the show. You can bet we were thrilled to do it. Who should we meet in the audience but Belva and Wes Dunn. They visited us for awhile in the Akala Room next day. Belva's dad invented and built the Dickerson guitars, including the push-button tuning-changing model played by Margie Mays.

Back to the Akala Room: One pleasant surprise was to see Mel Abe, 81 years old, on our stage playing steel guitar as skillfully and strongly as any younger person. He's back to playing as stand-in steel guitarist at the House Without a Key now and then. At the opposite end of the age spectrum was Eddie Punua who not only played very professionally for us, but brought along his beautiful wife and baby boy. Eddie is in his early 20's. He sings, dances, plays the back-up instruments and is very personable on stage. I'm putting my money on him to have a long and successful musical career in the islands. And here's the kicker - that very afternoon Eddie was

Continued pg. 13



Rising steel star, young Eddie Punua of Honolulu performed with style at Convention. A student of Barney Isaacs, he played at the 1992 Ho'olaule'a

STEELIN' THE GLOBE

(formerly "Other Clubs")

AIKANES O HAWAI'I - A new club in Florida that's just growing by leaps and bounds. Whoever is Hawaiian-minded in the Florida area consider joining this enthusiastic bunch of go-getters. They hold so many social events and have so much fun together, and are now branching out to the Maori and Tahitian cultures as well. The club celebrated April with a mini-Merrie Monarch Festival, and groups from Tampa, Largo, Orlando, and New Zealand took part. Contact them at: Aikanes O Hawai'i Inc., P.O. Box 260815, Tampa, FL 33685-0815 or phone (813) 884-3241.

YASU KAMIYA of Tokyo sent us this report of the Fifth Annual Touch and Tone Steel Guitar Convention: "It was put on by the steel guitar maker 'Canopus'. I must say that it was very moving this year. The past two years the convention has been graced by the sounds of the great Barney Isaacs and many other fine steel guitarists. This year however was very moving in the fact that the main attraction was 81 year old Bucky Shirakata. He was born in Hawaii. After graduating from the University of Hawai'i Medical School in 1933, he formed the group known as the Aloha Hawaiians Trio. He then came to Japan and introduced the electric steel guitar to the country. It might be said that he is a pioneer in steel guitar music in Japan. He inspired many youngsters to take up the instrument and now these youngsters are in their sixties and seventies and are still playing. That's why it was very moving, because many of these older ones were in the audience and had tears in their eyes as they reminisced of old days past. I must say though it is amazing how well and how beautiful the steel guitar strings still sound even at the hands of this older generation. His back up band are his own children who are all fine musicians. Of course in the audience too were many young faces who like to hear the sweet sounds of Hawaiian music as played on the steel guitar.

However, not all the music was Hawaiian. Steel guitarists such as Tony Ishida and Tony Ku who played some of the old standards, such as Stardust, Spanish Eyes, All of Me, Twelfth Street Rag, and the Steel Guitar Rag. All in all it was fun and everyone had a great time. Shinya Hasegawa, one of the performers, was in an automobile accident a week earlier and couldn't perform, so on

very short notice Takayuki Misono, a steel guitar player but not a professional, mustered up courage and filled in. He did a fine job. They all did a beautiful job. We thank Yasuhiko Kamiya for putting this convention together which is growing in popularity as each year passes. We thank his wife too for her contribution as one of the finest steel guitarists in Japan. We had a nice time, why don't y'all come over next time? Aloha, Sayonara, Good bye."

SCOTTY'S 22ND INTERNATIONAL STEEL GUITAR CONVENTION September 1st to the 5th. The location in St. Louis is what used to be the Clarion Hotel, now the newly renovated Regal Riverfront Hotel "in the shadow of the Gateway Arch". This is a very popular event. Many big time country steel players are scheduled to play. The brochure from Scotty will give the total list.

Among those who have played in the past are: Bill Stafford, Kiyoshi Kobayashi, Bud Tutmarc, Alan Akaka, Alvino Rey, Chris Templeton, Herb Remington, John Ely, and Jerry Byrd with Kalani Fernandes and Hiram Olsen.

On Wed. Sept. 1 the Steel Guitar Hall of Fame fund raising show starts at 7:00 pm, admission \$10.00. Registration opens at 8:00 am on Thur. Sept 2nd, and there's a Talent Search show in the Grand Ballroom at 7:00 pm that night, no admission charge. Friday, Saturday and Sunday are "Steel Guitars in Concert" days. On Saturday the 4th at 2:00 pm is the "Presentation of Awards" time when Joseph Kekuku will be given his place in the Steel Guitar Hall of Fame. We need lots of "Hawaiian presence" for this event. Merle and Ronnie Kekuku will be there to receive the award for "Uncle Joe". Alan Akaka and Jerry Byrd may also be on hand. Please plan to come, and bring your aloha spirit with you. Your Hawaiian garb is also welcome. Admission to the three days of Steel Guitars in Concert is US\$55.00 if paid at the door, or US\$45.00 if received **NO LATER** than August 15th. **Send check or Money Order to:** I.S.G.C. 9535 Midland, St. Louis, MO 63114. (314) 427-7794. Register at the Regal Riverfront Hotel, 200 S. 4th St. St. Louis, MO 63102. (314) 241-9500. Daily rates: 1 person US\$55.00, 2 persons US\$60.00, etc. If you don't have the proper registration form, be sure to say you're with Scotty's convention.

COMING UP IN OCT-NOV QUARTERLY:

- Funding a FREE Community Concert
- "Mele Kalikimaka" words, & music, for holiday parties
- "How to Get in Practice & STAY There"
by Akaka & Byrd
- Sammy Mitchell interview
by Ron Whittaker
- News, Views & Conventions

ALOHA INTERNATIONAL STEEL GUITAR CLUB

holds its annual convention at Willard School, Winchester, Indiana on July 15, 16, and 17th. There will be seminars at the Overpass Motel on Wednesday afternoon, July 14th and a lu'au on Saturday evening July 16th. The convention host this year is Don Sweatman, 681 Metropolitan Av., S.I., NY 10301. (718) 727-0157.

PEDAL STEEL GUITAR ASSOCIATION plans its 20th anniversary celebration on November 13th and 14th at the Comfort Inn, 50 Ledge Rd. Darien Connecticut, at exit 10 on I-95, The Connecticut Tpke. In past years the location was Armonk NY. You'll like the new location better since it's on highway I-95 between N.Y.C. and New Haven, CT, and the hotel rates are much lower at US\$50.00 per night. When registering, be sure you ask in advance for the special P.S.G.A. rates. The principals of this club are: Pres. Bob Maickel, V.P. John DeMaille, Treasurer, Photographer Clay Savage.

PLEASE USE GUIDELINES FOR ALL SUBMISSIONS.

Please request a "Reporter's Fact Sheet" for Quarterly copy deadlines and story format. Use it as your "writer's guidelines". That way, you won't get misspelled, misquoted or (it happens) misplaced. All steel guitar topics are acceptable. We reserve the right to edit for space and timeliness. Bylines and photo credits will be given. You do NOT need to be a steel player to submit a story - just an HSGA member committed to the perpetuation of Hawaiian steel guitar music, and the comraderie available with your membership.



All together now - '93 Hawaiian Steel Guitar Ho'olaule'a stars pose for a group "mug shot": (L to R) Jerry Byrd, Alan Akaka, Barney Isaacs, Nephi Brown, Owana Salazar, Kiyoshi Kobayashi, Herb Remington and Merle Kekuku...

future.

Guests with Zest

Herb Remington added some pure Texas chili to the Ho'olaule'a with his non-pedal, Hawaiian-style Remington Double 8 steel guitar. He was welcomed on stage with appropriate banter by Emcee Jerry Byrd. The two of them go back a long way. Herb's fame in steel guitar goes as far back as the 1940's, when he played with the famous Western Swing Band, "The Texas Playboys". He has recently released a Hawaiian recording; he's also a first-rate teacher and steel guitar manufacturer.

"Love to listen to Kobayashi-san play," Alan commented of Japan's foremost steel artist, Kiyoshi Kobayashi. "We are always honored that he wants to play at our Ho'olaule'a." At home, Kobayashi is called "Lion", and it's well-deserved for he's a premier stylist of Hawaiian, jazz and country music.

Once again, Mac Pavon was on hand and on stage to add some colorful and humorous steel "sound effects" to the program, in addition to a set of familiar Hawaiian tunes. He lives in California now, but Mac is a "Kaua'i boy", whose interest in Hawaiian steel guitar began when he heard a recording of Sol Ho'opi'i.

The Lady is Challenged

Meanwhile, in the back of the hall, as the second half of the show began, ushers (from the Kamehameha Band Boosters' Club), and those loyal HSGA members "maning and womaning" the lobby, crowded the auditorium doorways to hear the "big boys" play. Owana Salazar, who demonstrated what a polished steel guitar professional she has become in a few short years, heard Alan Akaka go into his beautiful and memorable arrangement of "Whispering Lullaby", and began to mutter through her teeth. "I'm gonna' chop his fingers off!" she exclaimed with a look of admiration. "Not before next year," Akaka said, after the performance. "YOU'RE going to play it at the '94 Ho'olaule'a." Fine tribute to a fine female steel artist. Go for it, Owana.

A Jam What Am

You folks who missed the convention in Honolulu, missed a Major Jam Session. As always, the conclusion to the Ho'olaule'a rounded up all the major

Continued pg. 5

'93 HAWAIIAN STEEL GUITAR HO'OLAULE'A OPENS A NEW ERA FOR HSGA IN HAWAI'I

A Night to Remember "Hawaiian Steel Guitar - A New Beginning" was the theme of this year's Hawaiian Steel Guitar Ho'olaule'a, held May 3 in Honolulu. For the third year in a row, Alan Akaka has produced this steel guitar bash as a free event for the general public. Each year, both production costs and generous contributions to HSGA's Scholarship Assistance Fund have been funded by major donations from corporate businesses in Honolulu. Musicians' honorariums are supplied by Music Performance Trust Funds in agreement with the Musicians Association of Hawai'i, Local 677.

This year's Ho'olaule'a was honored. Honolulu's mayor, Frank Fasi proclaimed the week of May 2 as "Hawaiian Steel Guitar Awareness Week", and Royal Hawaiian Band director, Aaron Mahi was the Mayor's emissary to read the proclamation on stage. "Next year, we're going for just plain 'Hawaiian Steel Guitar Week'," Alan Akaka declared, already thinking of big plans.

Featured artists on this year's program were Alan Akaka, Jerry Byrd, Herbert Hanawahine, Barney Isaacs and Owana Salazar. Emcee duties were handled by Harry B. Soria of KCCN Radio "Station Aloha", Alan Akaka and Jerry Byrd. The audience of close to 300 people was filled with HSGA convention attendees, in addition to local steel guitar music lovers.

Site for the 1993 Ho'olaule'a was the acoustically-great Ke'elikolani Auditorium at the Kamehameha Schools. It was built and outfitted as a performing arts theater, and the sound and lighting

were wonderful enhancements. (Another wonderful treat was Leina'ala Simerson and Her Ladies, playing in the lobby before the concert, and during intermission. We even had guest appearances by Genoa Keawe and long-time steel guitarist, Sam Makua.

"I just wanted to see how good we could sound with high quality audio", Alan said, in choosing the location. The eleven local and guest steel artists on the program made the most of the sound excellence, in spite of a few program "glitches". Casey Olsen had another gig, and his dad, Hiram Olsen was unable to play back-up guitar for health reasons.

"Whatever," said Alan, in his Hawaiian way, and in stepped two all-time favorites in Hawaiian music, Walter Mo'okini on guitar and Benny Kalama on ukulele. Kalani Fernandes, as always, did a great job plucking his bass. To fill the missing steel guitar slot, Alan welcomed back Greg Sardinha, who dashed in after work, for his solos.

A New Artist Debuts

The "up-and-coming" steel slot on the program went to young Nephi Brown. Nephi, a graduate of Kamehameha Schools, and a student of Jerry Byrd, made his stage debut, doing a fine job on "Steelin' the Chimes", "Down Country Blues", and "Pua Tubarose". Nephi plays a 1950s model Fender double 8, and a 6-string acoustic (We didn't catch if it was a National.) He commutes to his lessons with Jerry from the Big Island, where he performs regularly on the South Kohala Coast. We hope to hear a lot more from Nephi on steel guitar, in the

...while Mac Pavon plans his next musical surprise.



Continued from pg. 4

players in a rousing jam session. Just imagine, seven steel guitar artists wild and wingin' it on "I Wanna Go Back To My Little Grass Shack". Alan Akaka, Barney Isaacs and Jerry Byrd were flanked by Kiyoshi Kobayashi, Mac Pavon and Herb Remington; each added their special licks, and the audience was bouncing. **There's** an old song that'll never be the same again!

A Special Gift, and a Raffle

Every year, the Ho'olaule'a receives sponsor donations of "gifts in kind". This year, "Fashion Designs by Mamo", a well-known creator of Hawaiian fabric designs and men's and women's aloha fashions, provided shirts for all of the men on the program, and a beautiful *mu'umu'u* for Owana.

Round-trip airline tickets for Neighbor Island travel were donated by Aloha Airlines, and Aston Hotels & Resorts provided Maui hotel accommodations for two. These, plus Compact Disc sets featuring steel guitar, from Hula Records, were raffled off, providing additional contributions to HSGA's Scholarship Assistance Fund.

The HSGA audience was delighted when Lorene Ruymar won round-trip air tickets for two, and HSGA member Sam Makua won a weekend in Maui. "We thank everyone who bought raffle tickets and only wish we could have had prizes for everyone in the audience," Alan and Jerry said.

Next Year?

"We'll go back to the Ala Wai Golf Course Auditorium, Monday, May 2,

ACROSS THE BAR

(formerly "Kumakagab")

by Lorene Ruymar

JAMES CATHRO of Glasgow, Scotland needs your *kokua* if you were with us in Hawaii this year. He came such a long distance only to find that his tape recorder was somehow damaged enroute. He first discovered it at the Ho'olaule'a. His second biggest disappointment was not being able to record the Hawaii Calls show. I assured him that somewhere in the group of members who were successful in getting recordings there'd be a generous soul who would share a copy. I suppose that holds true for the music in the Akala Room. Jim wouldn't have had any luck recording any of it. Mail to James Cathro, 33 Kirktion Crescent, Milton of Campsie, Glasgow, Scotland U.K., G65 8DP. I'm sure he wouldn't mind covering your expenses.

WHAT'S THE SCOOP ABOUT PIPE SMOKERS? You must remember the item in the last newsletter saying we're searching for HSGA's true pipe smokers. We were not out to convert them. It was Jerry Byrd who started the ball rolling by donating his total PRICELESS set of unused pipes and smoking paraphernalia (some of them autographed and engraved) to HSGA. Although Jerry has kicked the habit, he can still remember the pleasure it gave to him in earlier days, so he asked that they should not be given to souvenir collectors, but to true pipe smokers who would enjoy them. Well, we did identify a small group of puffers, but James Cathro (Scotland) was the most eager, so he is now the proud owner of a

1994" says Alan Akaka. "While Kamehameha offers the very best sound system and back-set lighting effects, I'm afraid it's not the best location for our local audience." This year, HSGA members were bused to the Ho'olaule'a from the Queen Kapi'olani Hotel, as the school sits high up on a hill, to the west of downtown Honolulu.

"If we want to be accessible to the Honolulu community, and our visitors staying in Waikiki, we need a concert location that's easy to reach," Alan stated. The 1991 and 1992 Ho'olaule'as each saw upwards of 600 attendees. Many come straight from work to this annual Monday "May Day" event. Watch for 1994 Ho'olaule'a news in next April's issue.



magnificent collection. To show his gratitude, he has donated \$150.00 to the HSGA Scholarship Fund. This time, everybody wins.

STILL IN THE BRITISH ISLES - JOHN MARSDEN WANTS A WORD WITH YOU. "I hope the convention went well. Several of my friends are attending, including Geoff Powell and Jimmy Cathro. Jimmy is without question the leading Hawaiian music authority over here. "I attended a very delightful 50th birthday luau last Saturday (April 24th) near Birmingham, put on by Pat Henriques, former wife of the famous steel guitarist Basil Henriques, who both performed with the Waikiki Islanders, resident band for many years at the "Castaways" nightclub. Pat plays guitar. Quite a few of our BMGTape Club members attended, and there was music by Keith Worley (I sat in on bass guitar), and two sessions featuring Maurice Hipkiss. Members of the Waikiki Islanders, including singer/emcee Frank Kahili, put on a charming floor-show, featuring dancer "Leilani". Maurice plays a Bennett pedal guitar, and has a gorgeous Hawaiian style. He and Keith are rated as two of our very best players over here. All of the Waikiki Islanders seem untouched by the passage of time, and it was a most beautiful and glamorous evening that will be long remembered! **NOTE:** Thanks again for a great article, John. I don't usually put notes about social gatherings in our gossip column, but John's article is more in the line of a regional get-together and our new editor wants MORE of our international members to hear who's doing what closer to where THEY live. (Hint.)

John also said, "Have you seen the April issue of 'Guitar Player'? Yet another date for Kekuku, too!! MEMBERS: Lorene doesn't subscribe, so if you have a copy, PLEASE send the whole article to her to keep as file reference material "for whatever is yet to come."

DUKE KALEOLANI CHING - our steel guitarist from the Hollywood area, but native of the Islands, was having an absolute BALL in Hawaii. I guess going home does that to all of us, but this

Continued pg. 6

was very special for the Duke because we went on to his birth island, Kaua'i for the second week. He was excited before he even left Hollywood, and that caused him to design those HSGA T-shirts I told you about before. He arrived with THREE SUITCASES FULL of them (about 70 or 80 shirts, I believe) and went home with THREE SUITCASES EMPTY. Sold or gave them all, donated proceeds of \$60.00 to HSGA. Can you imagine the COST and the WORK involved? But all over the islands on any given day you'd see groups of people in shorts and a delicious green-toned blue T-shirt saying "Hawaiian Steel Guitar Association Member" on the back, in large letters. THAT gave us more publicity than any one thing, the shirts were so striking.

To appreciate this story, you have to get acquainted with the ROYAL TRIO. Along with the Duke there were Prince John (Auna) and Emperor Bernie (Endaya). We wanted to call them the Royal Flush but that takes FIVE, so maybe "Royal Fish" suits them better. They were so thrilled when they visited the Halekulani's House Without a Key to hear Alan Akaka play. Alan called the group to play a set during his intermission and explained to the audience that the Duke is related to steel guitar virtuoso the late Jules Ah See and that the Magnatone steel guitar that he (Alan) plays once belonged to Jules. Two days later the Royal Fish swam over to the Kahala Hilton where Barney Isaacs was playing. They were asked to play not one but TWO intermission sets! Duke floated around for a couple of days, couldn't get his feet back down on the floor.

The following week in Kaua'i, same problem. People kept rushing up and hugging the Duke - he was either a long-lost family member or a school chum or a big-time Hollywood steel guitar player, everywhere he went. SOME Royal Hawaiian homecoming that was!

CHARLES E. TAYLOR says, "I have an old record made by Warner Bros. Records entitled "Evening In The Islands" by the Maile Serenaders. (Warner Bros. Record #W 1584.) It would make me very happy if you could get me a cassette recording of this well-made record. The artists used on this record were the best. I'd be so thankful." Well, people, I suppose there are two ways we could help here. (1) Is there anyone living near Charles who has a 78 rpm turntable who could play the old recording and tape record it? or (2) Has

this record been re-issued in a collection of other songs, available on a tape cassette? Contact Charles at 15 Fairmont Ave, Houston PA 15342-1716.

LANE VIFINKLE has a few inside stories about George DeFretes to share with us. Lane knew him personally in Holland. "For political reasons George was forced to leave Indonesia in late 1957 or early 1958. He did so as a stowaway on an ocean liner bound for Holland. His popularity with the Dutch-minded Indonesians (of which there were many in Holland) was such that a representative of the record arm of the Philips company travelled to Suez, Egypt, to meet the ocean liner and sign George before anyone else.

"However, when George arrived in Holland he was jailed for illegally entering the country. After much pressure from his sympathizers, he was released, ready to re-start his career. He attempted to regroup his 'Royal Hawaiian Minstrels', with some degree of success and some difficulty. A major plus was that his ex-wife Joyce O'Brie (a great vocalist who sang in prior years with Rudi Wairata) agreed to sing with the band. The following is strictly speculation on my part: Part of the arrangement was to have her then-present husband Fred Hoogduin play bass with the band. Fred was an accomplished pianist and accordionist not a bassist. If you listen to the first songs on the tape, you will hear that the bass playing is not up to the level of the rest of the band. The bass level is high, something I think Joyce had something to do with. This was a radio broadcast and the audio engineers then were very good.

"George was more a purist than Rudi Wairata, so his commercial success was not as big after the novelty of his spectacular entry into the country had worn off. So in the sixties, he migrated to the U.S. As so often happens, people who are artistically very gifted lack some of the business sense that is needed to be financially successful. When George died in 1982 it was necessary to take up a collection among his friends to bury him. His grave is right by Sol Ho'opi'i's."

NOTE: Thanks for a great insight into George DeFretes' life. If you can think of any more anecdotes, they're always welcome. You had a privileged position to know him personally. His recording shows what an excellent steel guitarist he was. I like Rudi Wairata's playing too. They're both ranked among the top steel guitarists of all time, I believe.
MORE TALK STORY FROM RALPH KOLSIANA How many of

you have heard that John Ely has joined with Leon Redbone to tour half a year (which is about as much touring as John would like)? They do that just so they will be free to come to Joliet this fall. True? I wish!! And who took John's place with Asleep At The Wheel? Right! The blonde, Cindy Cashdollar. Maybe she can't out-play John but she sure can out-look him.

So - back to Ralph Kolsiana. Here's his letter: "Well, it looks like Andy's done it again, as he interviewed me over the phone last week from Boston for a writeup in the Pedal Steel Guitar World Referral and Exchange magazine and I suppose it will be in the next issue.

"I've been so worried over an upcoming cataract operation on my one remaining halfway good eye. There's a 50/50 chance that I'll see better again or be blind from then on. Did I ever mention that Andy Aiona also played backup guitar for me when I was playing at Bill Whyslin's Hula Hut on Sunset Blvd? Also Auggie Neves, my regular rhythm guitarist who was with Kalei and me along with Bill Whyslin on uke and MC'ing. Andy also alternated with me on steel and Auggie also bartended for Bill at the same club in between sets. AND, Henry Allen, now living in Maui, also played backup rhythm guitar with me when he was stateside in the mid-fifties.

"By the way! The young lady who took John Ely's place was the same steel player I wrote you about who was the backup steel blues player for the famous blues singer from old New Orleans named Leon Redbone, pretty well known in blues circles. Anyhow, her name is Cindy Cashdollar and she plays a mean steel. It seems she bought a tape of mine through the ad in Guitar Player and when they came on here from the east coast she decided to call me and wanted to meet me and take a few lessons in the Hawaiian style steel. She came to my house for the two weeks they were appearing here and we became good friends. They appeared at the Hollywood Roosevelt Hotel and she arranged a pass for Sammy and me to come and see their act. It was quite interesting. He is quite the comedian and plays nice blues style guitar. She and her husband who is, as I understand, a top guitarist, just moved from N.Y. to Nashville as she felt they'd get more work there. As it seems, she was probably right because right after they moved there, Cindy and the Redbone group (which also consisted of a pianist, bassist, clarinetist, and Leon's guitar) got a contract to tour Europe,

Continued pg. 7

Continued from pg. 6

starting with Paris. She wrote me from there and was very happy, so I was surprised to hear that she replaced John on Asleep At The Wheel."

NOTE: I just phoned Ralph to see how the cataract operation went and he says it's postponed indefinitely. Send us more yarns, please, Ralph.

GEORGE K. NAINOA Anyone who has followed the Joseph Kekuku story should sit bolt upright when they read this name. George and his uncle Sam K. Nainoa are part of the surprise that awaits you in chapter one of "our book". As I said, there are many surprises but I like to keep you in suspense until you have the book right before your very eyes. George lives in Stockton California and he was VERY keen on attending our Hawaiian convention. Well, Lady Luck and Madame Fate just didn't allow it this time. George had this to say about our moving HSGA to Hawai'i. "Although I have never met Alan Akaka (he was a baby when I was at home), his Uncle John is a close aikane of mine. He certainly is a good choice and boy, he has all the advantages we never had. I mean with all the steel players giving him advice... damn! Nobody taught me anything! At any rate, I hope this note finds you and yours full of joy and hope that you have made the right choice in moving to Hawai'i. May I be the first to say 'Welcome to the Hawaiian Islands, 'A hui hou. Aloha'."

PAT AND ARTHUR JONES of Wales don't usually miss an HSGA convention in Hawaii, but they've had to send regrets due to ill health. Heart surgery has been postponed but Arthur is on a heavy drug program to get a bladder tumour under control. We missed you two a lot, and a "get well" card was signed by everyone. We hope you have received it by now. To help with the cure, Warren Slavin dedicated his music performance to you. Whenever good times and lots of laughs are being had, Arthur and Pat are usually in the middle of the action. Laughter is the best medicine, so I'm positive Arthur (and Pat) will be back with us for the next convention good as new.

GEORGE KAINAPAU WAS A STEEL GUITAR PLAYER! Did you know that? I didn't! In our January and April newsletters I gave a short life story of George Kainapau and announced his passing. I did that because he was such a great falsetto singer and musician. I

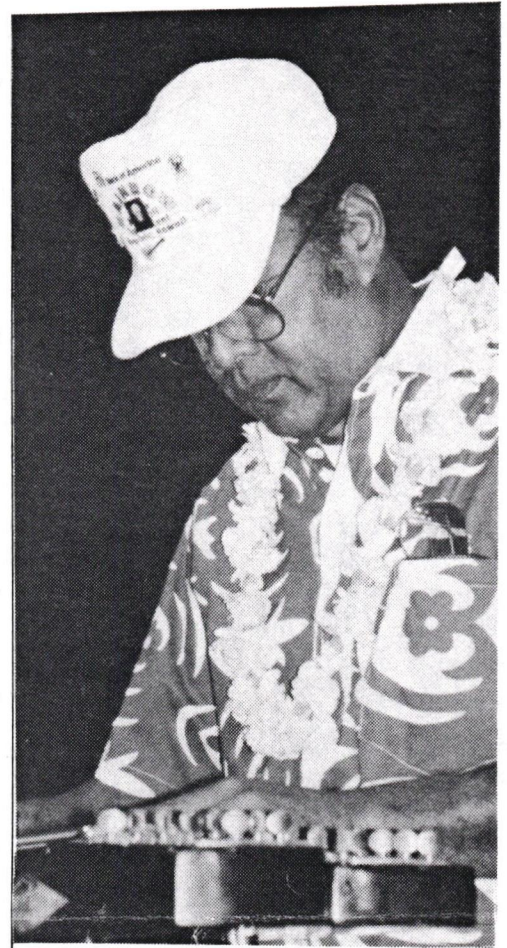
READY GANG? LET'S GO!

from Lorene Ruymar

JOLIET CONVENTION AUG. 26, 27, 28 Donna sends high compliments and thanks to all those who registered in advance last year. I guess you realize that the Millers leave their condo in Honolulu at the end of July and fly to Mesa, Arizona, where they pick up their car and drive to Joliet. They get to Joliet about the same time as we do. That's why it's important that you get your registration (whether you pay it in advance or not) to them before they leave Honolulu. **The July 25th registration deadline is REAL.** Please do your good deed for Donna again this year. Frank says, "Bring stage amps and bass guitars and rhythm guitars, please." We're always short of those in Hawai'i, too, and you can't have much of a show without them.

ST. LOUIS, SEPT. 1 - 6 How many of you are going on to St. Louis after the Joliet convention, to attend the induction of Joseph Kekuku into the Steel Guitar Hall of Fame, and to enjoy more steel guitar playing, of a different kind.. The Millers, Ruymars and the Kekukus are going. Who else? Be sure you reserve a room at the Regal Riverside Hotel EARLY. Scotty has been known to sell out the place. This year: Jerry Byrd with Hiram Olsen and Kalani Fernandes will be there, Alan Akaka and many other Hawaiian-style players, too. If you EVER plan to attend Scotty's show, this is the year **Traveling from Joliet to St. Louis:** For those who may be interested, here's info about **Amtrak Trains:** Fare is \$39.14 one way, \$45.32 return and you don't have to reserve in advance. #303 leaves Joliet, 11:50 am, arrives St. Louis, 4:25 pm You can buy food on the train. #305 leaves Joliet, 4:20 pm, arrives St. Louis, 9:00 pm. #21 leaves Joliet 6:40 pm, arrives St. Louis at 11:30 pm. We'll allow time and space for a meeting on the first night of our convention. If a groups wishes to travel together by bus or train, tickets can be bought, no problem.

didn't know until I read it in Saichi Kawahara's article in the Kapalakiko Productions Calendar of Hawaiian Events that George was also a steel guitar player. This information came from his wife, Ruth Simpson Kainapau.



HERBERT HANAWAHINE BRINGS "PURE HAWAIIAN" SOUND TO HSGA STAGE IN JOLIET Herbert Hanawahine will be the featured guest artist at our Hawaiian Steel Guitar Association Convention in Joliet this year. "Herbert plays a pure, simple style, all his own," says Jerry Byrd. Herbert has entertained over the years with singing artist Genoa Keawe and hula masters John Pi'ilani Watkins and Kealoha Kalama. He has also recorded with Genoa, Kealoha and Peter Ahia. A regular on the Honolulu Ho'olaule'a programs, Herbert is self-taught, and started playing steel at age 17. Jerry claims his style includes "a little bit of Benny Rogers, David Keli'i, Jules Ah See, but still his own sound". Alan calls Herb's playing "the mellow back-porch Hawaiian sound, we hardly hear anymore."

Merle Kekuku bought a guitar in Japan for only \$35. He said it was

A "STEEL".



Next time anyone says HSGA is NOT "international", show them this picture, from our Hawai'i convention: (left) Rudolph Barten, from Germany, (middle) Doug Lomax, New Zealand, and (right) playing the world's smallest steel guitar, Jess Bishop from England. It all sounded JUST GREAT to our audience, and more enthusiastic Hawaiian steel guitarists you won't find anywhere around the globe. They came a long way to join us, and we showed our appreciation.

BUY & SELL

(formerly "Makemake")

JERRY BYRD TABLATURE Professional and student-level tablature arrangements in many different tunings: Hawaiian, standards, Christmas, gospel, etc. For Jerry's catalog, send self-addressed stamped envelope to Jerry Byrd P.O. Box 15026, Honolulu, HI 96830.

VINTAGE GUITARS wanted by William Busalacchi. He's starting up a vintage guitar shop in Seattle and he's anxious to buy and sell all kinds of guitars. Contact him at 1912 S. W. 167 St., Seattle, WA 98166. (206) 243-6247

STEEL INSTRUCTION SHEETS James W. Moore is the proud owner of the complete set of steel guitar lesson sheets put out by the "Natural Music Guild" of Santa Ana in 1952. Beginners looking for this kind of material, contact James. Specify what tuning you're using and whether you want notes, tablature, or both. James W. Moore, 100 -15th St., Apt. A-14, Bay City, MI 48708.

JERRY BYRD FRYPAN FOR SALE Short scale, serial number JA005. Mint guitar and case. Selling price US\$700. Richard Jacksie, 10411 Georgetown Drive, Rancho Cordova, CA 95670. (916) 635-3331

LOW PRICED SHO BUD STRINGS "I have recently acquired an inventory of 40,000 Sho Bud guitar strings. After checking string prices on the market, I have discounted the prices on these sets. Write for price list." Cope McDaniel, 6261 Valley View Rd., Goodlettsville, TN 37072. (615) 859-3910

8-STRING JERRY BYRD LONG-SCALE FRYPAN FOR SALE In brand new condition, with case. Very small serial number. Asking US\$900. Art Ruymar, 2090 West 44th Ave., Vancouver, BC, Canada V6M2E9 (604) 263-8944

JUST RELEASED: BOB BROZMAN'S NEW BOOK "The History & Artistry of NATIONAL Resonator Instruments", by Bob Brozman with Dr. John Dopyera Jr., Richard A. Smith, & Gary Atkinson, is now available at bookstores, or write Ron Middlebrook at Centerstream Publishing, P.O. Box 5450, Fullerton, CA 92635. (714) 779-9390. Centerstream's blurb reads "the only book that covers the complete history or National guitars. Describes with text and photos, National's array of instruments and models, the early years, the

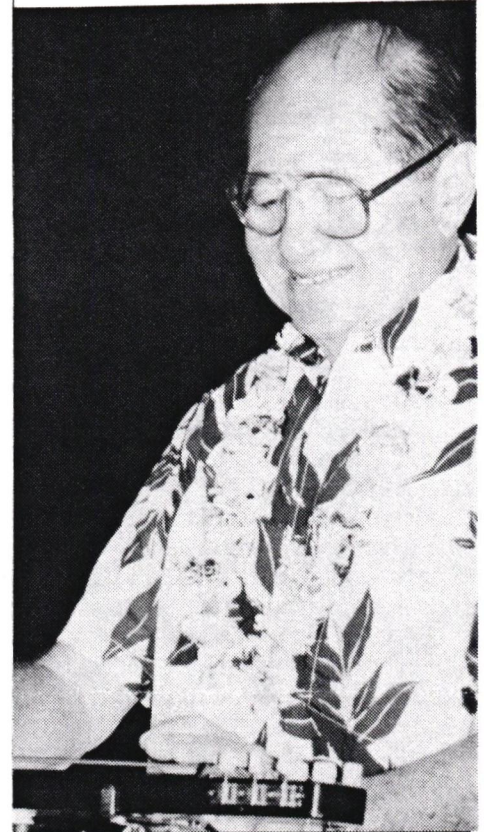
search for amplification, construction, Hawaiian artists using Nationals, Blues and Jazz artists using National. Includes advertisements and catalog photos, set-up and maintenance, the future of National today, serial number listing, a chronology from 10-12-26 to 1942. Hundreds of black/white photos. plus 32 pages of over 90 color photos. 298 pages total." Hard cover/US\$48; Soft Cover US\$35.

6-STRING "ELECTRO" LAP RICKENBACHER steel guitar (non-adjustable legs). Wooden body, great condition. Case w/key locks inc. Serial #0487. \$200. And **DOUBLE NECK 8-STRING EXCEL** by Jerry Byrd. Serial #010. Case inc. \$1200. Contact: Paul Kim (J. Byrd student), 561 Kawaihoa Rd., Kailua, HI 96734. (808) 261-3968.

WANTED: USED ACOUSTIC STEEL GUITAR OR DOBRO. "Please state condition, price, if there is a case, model, and date originally bought." Contact new member: Tets Ushima, 1551 'Ainakoia Av., Honolulu, HI 96821.

CONVENTION VHS VIDEO CASSETTES & STILL SHOTS produced by Clay and Lois Savage. Stills are \$.50, min. order 2, please. VHS are \$15/USA & Canada, inc. postage. Foreign: \$17 inc. postage. Write Clay for '93 tape info, and older still available: 6939 Kingston Ct., Port Richey, FL 34668, 813 863-0804.

"MEET ME IN ST. LOUIS" says Merle Kekuku, who will be at Scotty's "International Steel Guitar" Convention, Sept. 1-6, to witness the induction of Joseph Kekuku into the Steel Guitar Hall of Fame. **JOIN US! REGISTER WITH SCOTTY NOW.** (See "Let's Go", pg. 7)



Nothing like starting 'em early. Bob Brozman tunes his baby daughter in to the sound of Hawaiian Steel Guitar, at the Honolulu convention. (Writer's R&R, Bob?)





COCONUT WIRE



(formerly "Taro Patch")

"HAWAI'I CALLS"

Report from Lorene Ruymar

We all dashed off for the "Hawai'i Calls" show in the Tropic Surf Room of the Hilton Hawaiian Village, and abandoned the few stalwarts who stayed on to keep the Kapi'olani Bandstand show running to its scheduled end.

The show we missed, while we were in Kaua'i was one that had Benny Kalama and Sonny Kamahale back, and Andy Anderson, the great songwriter who turns 99 on June 6th of this year. They had all worked together on the original show, so it must have been great for them all to do the show together "for real" again. If a radio station in your area doesn't get the show, you can write to Hawai'i Calls, Box 2457, Honolulu, HI 96804 to order tape cassettes, pictures, etc., or to contact Bill Bigelow. Ask for catalog, too.

If you think a radio station in your area carries the show and you don't know about it, just send Bill Bigelow a self-addressed stamped envelope and ask for his list of stations. If you're in the suburb of a big city, say what big city you're just outside of. I did publish a list of stations in the January 1993 Quarterly, but it's continually changing. For those who like to stage their own Hawai'i Calls show, we have the correct script for you, courtesy of Bill Bigelow:

sound of waves on beach

Bill B. "This is a call from Hawai'i!"
Sound of conch shell, followed by waves

Bill B. "And these are the waves of the sparkling blue Pacific Ocean...caressing the beach here at Waikiki". (conch shell)
"The conch shell signals the beginning of another program featuring the music of the Islands of Hawai'i."

CHANT (with soft steel guitar in background) Punini McWayne: "Eho'olohe! oluolu mai oukou i ka makou mele ana!"

CHANT Iwalani Kahalewai: "A ke ho'ouna aku nei makou i ka makou aloha nui loa ia oukou a pau! Aloha no-oooo."

CHANT Boys: "E Elepani"

Steel guitar softly, while **Bill B** says: "You're with us, here in the Hawaiian Islands, America's 50th State, and we're coming to you from the Hilton Hawaiian Village Hotel, right on Waikiki Beach. I'm Bill Bigelow welcoming you to Hawai'i Calls, a radio tradition since 1935. With us today are kama'aina who live here year 'round, plus visitors from Canada, many mainland states,

and folks from other faraway places. We greet you all, with a big Alooo-ha, as....HAWAI'I CALLS!"

TO CLOSE THE SHOW:

CHANT: Punini, "Aloha, aloha ahiahi ia oukou a pau loa!"

CHANT: Iwalani, "A hui hou kakou i keia Po'aono ae. Aloha no-o-o-o."

Bill B. "Well, the time has come to say Aloha 'Oe, for just a little while. We'll be back next week...same time...same station, from the Tropics Showroom at the Hilton Hawaiian Village. Our special guest will be _____. Till then, this is Bill Bigelow, speaking for the 'Ladies and Gentlemen of Aloha,' and for today's guest star _____. From all the people of Hawai'i, who send you this program, here's our wish for good luck and much happiness to you, until we meet again, when...HAWAI'I CALLS!"

Music louder "ALOHA 'OE", then fades.

AKAKA STEPS IN On the June 19th show, Alan Akaka stepped in on steel, at the last minute, when Barney Isaacs' doctor confined him to a hospital bed for a week. Seems Barney wasn't obeying doc's "medicine orders", and Barney contracted some fluid in his lungs. He's okay now, as we go to press. It was reunion-time for Alan, who was part of the 1980s "Hawai'i Calls" radio show.

SUPPORT HAWAI'I CALLS Is this radio program available to you through a local radio station? If so, phone them now and then to express your appreciation. Get your friends to call in too, so the station knows the show has an audience. If you DON'T receive it in your area, even more reason to phone your radio stations. Pick one that plays the soft and gentle kind of music. Tell them to phone Bill Bigelow at 1-800-HI CALLS to arrange for the show to be broadcast in your area.

HOWARD STEPPAT says, "I taped Hawai'i Calls from WPEN 950 am Philadelphia 1:00 pm Sundays. Sent radio station a thank you for broadcasting it. It went off the radio for three weeks, so I wrote to the station and asked them to please broadcast the show again. Waited three weeks for an answer. The show came back on at 2:00 am Saturday night. (Wow - I could not believe it!) They said the show was subject to change. Then I heard it was back on Sunday, at 6:30 pm due to letters and

phone calls."

LORENE SAYS: One letter carries more punch than many phone calls. If there's anything the HSGA gang can do, it's write letters. Isn't it great to know that your letters CAN pay off. Thanks, Howard. THANKS FOR THE HAWAI'I CALLS NEWS CLIPPING FROM JACK MOORE IN CHICAGO, TOO.

STEEL GUITARIST TO PERFORM FOR THE U.S. SENATE IN WASHINGTON D.C. Which steel guitar player? Leona Murphy of Kailua-Kona. Here's the whole story, as reported in the Hawai'i Tribune-Herald, on Friday April 30th. "Na Lima Lele O Na Kupuna, under the direction of Buster Jeremiah, and representing Hilo's Kamana Senior Center, will perform for the U.S. Senate in Washington D.C. on May 18th, at the invitation of Sen. Daniel Inouye. The senior citizens' performance group, whose members range in age from 58 to 80-plus, utilize ukuleles, guitars, English handbells, and bamboo organs, and dance hula. While in the nation's capital, Na Lima Lele O Na Kupuna will perform at the 9th annual Senior Fair as part of a nationwide observance of Senior Month. The group will proceed to Seattle Washington and Vancouver Canada, to entertain at a halau fundraiser and various senior centers." Best of luck and congratulations, Leona! We're watching for you to come through Vancouver.

A MESSAGE FROM PRINCE JOHN (Auna). "It has been one 'H' of a time in Kauai. I enjoyed it with all our people each night, playing steel guitar. You both (talking to Art and me) have been so instrumental in the presentation at the Sheraton and in Hanalei. The Wai'ale'ale Boat Trip was wonderful. We all had a good time, even if we had no lu'au there. I hope the next time we can. "On Friday we three - the Duke, Herman Paleka and I - went to the High School at Kapa'a and played for lunch time outdoors, for 45 minutes. They really enjoyed the Duke playing steel guitar, and with Herman Paleka on the bass. Sunday a.m. Duke and I flew to Honolulu. Buddy got his bass from us and the banner was delivered to Vic on Monday. Mahalo very much for your kindness." (Next year, Maui, okay John?)

Continued pg. 11

Pure Hawaiian vocal magic, in a duet by John and Ginger Auna. You should see the personal autographs written all over the sides of his guitar!

Continued from pg. 10

A HAWAIIAN STEEL GUITAR HO'OLAULE'A WITHOUT HIRAM OLSEN? "YES", said Hiram's doctor. Hiram's heart played some nasty tricks on him, right before the concert at the Kamehameha Schools auditorium. (Probably needed more rest than it gets from Hiram's long days at work, and nights with the Hiram Olsen Trio). So Walter M'okini played back-up guitar. But was Hiram daunted? Are you kidding. Concert night was the day he got out of the hospital, and he and his lovely wife showed up half-way through, and smiled encouragement from the audience. Hiram has been ordered to REST for six months. PLEASE do it, Hiram! You are one special guy, who knows every steel player's moves, and in your quiet and dignified way YOU'RE the one who makes them all look so good in concert. Ask Alan and Jerry!



AHA KIKA KILA

Steel Guitar Get Togethers

NANCY GUSTAFSSON AND VIE RITTENBAND (HSGA Treasurer) were truly honored this year, when two of their songs, in the Hawaiian language, were used by *kumu hula* at the annual Merrie Monarch Hula Festival in Hilo. Kumu Hula Johnny Lum Ho's "Miss Aloha Hula" contestant danced to "I Lanikai" (Nancy's song), and Kumu Hula Al Bacarse's male dancers used Vic's song "*Ka Makika Li*" about naughty mosquitos, for their contemporary (*Auwana*) entry. Said Nancy and Vic "it's taken 30 years, but we've finally gotten Hawaiian community recognition."

Make your day
with HSGA.
Come on, SMILE
HAWAIIAN
STYLE!



MEET THE STEEL GUITAR PLAYERS OF NEW ZEALAND Here's an invitation to all our members to bring their steel guitars along. "Bruce and Lynn Murray extend an open invitation to all H.S.G.A. wishing to visit New Zealand for a vacation. We will home host you and endeavour to show you as much as possible of our beautiful country. Don't bring your amp (unless you wish to), just your guitar. We can manage plenty of musical stops. For further information, please write to the Murrays: 578 Carrington Rd., R.D. 1, New Plymouth, New Zealand (011) 06-75-34534." What an opportunity! And no time limit!

**NORTHEAST
MINI CONVENTION -**
reported by Warren Slavin

"Our Northeast Mini-Convention was a success. About seventy five people passed through the door with about sixteen steel guitar players plus Bob and Julie Waters who were the key performers. We came out ahead financially also, with a little left over. Don (Sweatman) and I also recovered our 1992 losses. We learned a lot with this venture. Now I know what Frank Miller goes through each year. We had Kulani

Purdy, relative of the Purdy Ranch people on the Big Island, drop in. He brought Betty Makia (Sam's Widow), also Hale Rowland, niece of Rose and Tau Moe. They danced while Bob and Julie sang. Kas "Kaleopua" Nakamura from Maryland also was there. She operates a dance studio in Pasadena, MD. We passed out comment sheets and everybody was impressed and want more next year. We're talking."

WORLD-FAMOUS STEEL GUITAR CONVENTION AND CONCERT.

This is the one that was to be held in Houston Texas on June 4 & 5, organized by Kenneth Fain. Ken is sorry to say he had to cancel the show due to insufficient funding. "Maybe another time," he says.

MAPLE RIDGE GET-TOGETHER (VANCOUVER AREA) This one is still definitely ON, but by the time you get this newsletter, it will be history. The Maple Ridge event grows a bit each year and more steel guitarists are hearing about it and turning up to play. Yes, we even get people driving from as far as Seattle, Portland, and across Canada from as far as Edmonton. Right, George and Mary Lake?? It's so much easier doing a one-day event. No stress!

MEMBERS' CORNER

Are you seeking an answer to a steel guitar question? Would you like to hear from other members on a special project or issue? Do you have a comment or opinion you'd like to pass on to ALL HSGA members?

This new, (and we hope) regular column is for you, and will be "written" by you. Your name and state will appear, so other members can find you, and respond. In deference to the rest of the membership, no "anonymous" contributions. ("And we made add comments," says Your President.)

The following members' questions and comments were received in recent mail, with 1993-94 membership renewals.

From Ed and Ginny Kuchenbecker of Mesa, Arizona - "All HSGA members - pros and non-pros - send (HSGA Quarterly) a brief note of how you are promoting the steel guitar in the area in which you live." (Perfect! Why not write us the steel news in the Mesa, Tempe, Phoenix?)

Southern California members, listen up, Gracia J. Mulligan of Long Beach wants to know "Where are tapes and guitars sold in the Long Beach area?" She's

also a great future-thinker, one of the things she wants HSGA to achieve in the future is "a TV show featuring steel guitar — like 'Hawai'i Calls'." (Way to go, Gracia!)

Tets Ushijima of Honolulu is "seeking information on non-electric lap acoustic steel guitar, other than Dobro or tricone. Would appreciate any information about who may be making them, where they may be available, price, etc." (If you get a good response, Tets, tell us. Maybe we can publish the information for all HSGA members.)

A potential member, Chuck Davidson of Durham, North Carolina sent in colored pictures of an acoustic steel guitar, vintage early 1930s, which he owns and took lessons on in 1960. It originally belonged to his mother, who played. The brand name is "Oahu", and manufacturer was "Oahu Publishing Co." according to the oval plate on the guitar. The guitar has a body crack on the front, from "being put away strung". Chuck's question "can anyone offer information about the guitar and whether it is worth getting repaired?" (Please send your response to Alan Akaka at HSGA, and it will be passed on to Chuck, whom we

HOPE will join HSGA shortly.)

Del Hostetler from Maryland took the thoughts right out of our heads! He wants to know how other members discovered HSGA. "Maybe that will help us pass the word faster, and increase our membership...we MUST find a way to recruit (new members)". (RIGHT ON, Del. Alan Akaka has a goal of 1,000 members by the end of 1994. Watch for HSGA's Membership Drive in the Oct./Nov. Quarterly — special discounts for bringing in new memberships, and promotional material, and "how tos"! Until then, carry HSGA Membership Applications with you, available from HSGA office, and pass 'em out to anyone who loves Hawaiian music. Remember, members DO NOT have to be steel players — just lovers of the music.

Edmund W. Hansen of Denmark wants a Quarterly article about guitar building. (OKAY OUT THERE IN HSGA LAND, your editor needs help. Herb Remington? Anyone else?)

Mike Dewart of Kentucky requests HSGA to "sponsor tours of the islands with knowledgeable tour guides at least every other year ... for mainlanders who seldom get to see the REAL Hawai'i; this in addition to conventions..." (We're working on it - stay tuned.)

FINANCIAL STATEMENT

Second Quarter 1993

Dear HSGA Members,

Normally, each issue of the Quarterly, you will find a balanced checking account statement to tell you (1) how much money HSGA took in, from membership and other activities, (2) how much of your money was needed for expenses like conventions and this quarterly, and, (3) how much money is available in an HSGA Savings Account Scholarship Assistance Fund.

Because some savings accounts are still open in Bellingham, Washington, and the June 1993 checking account statement (because of the transfer to Honolulu) has not arrived, and thus we are unable to present you with an accurate report and still get this magazine to you as quickly as possible, we have no accurate financial statement in this issue.

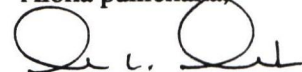
The October-November Quarterly will carry a full six-months statement, prepared and balanced by an accounting person. Please know that HSGA is in good, safe financial health, and we have sound plans for future ways to hold

expenses in line while we increase both membership and scholarship areas of income.

I do, however, wish to take some of this space to say *mahalo* many times over, to those members who donated proceeds from their sales at the convention, and those who put money in the calabash during our concerts. According to Lorene's report to me, you folks contributed a total of \$532 to the HSGA treasury. Some of the contributors who showed true Hawaiian-style kokua this year, were: Doug Lomax, Rudolf Barten, Duke Kaleolani Ching, Clay and Lois Savage. As much as possible, all such kind gifts will accumulate in our scholarship savings account, and benefit serious steel guitar students who are deemed in need of funding, by a credible scholarship committee which has not yet been selected. I would also like to thank the many members who added donations to their 1993-94 renewals.

Until October, get yourself primed for a major (and individually-rewarding) MEMBERSHIP DRIVE.

Aloha pumehana,



scheduled to write his General Accountant's exam. What a cool dude! Oh, and I nearly forgot....there was another cool dude who played for us. Fella named Jerry Byrd. Said he was a steel guitar player???...(He was RIGHT!)

On our last day in Honolulu we had the Bandstand Show in Kapi'olani Park starting at 9:00 and by 11:00 most of us went booting it for the Hawaii Calls show. Conflict of dates! George Lake took charge of the Bandstand show and did the M.C. job very capably as usual. I'll just list all of those who played steel guitar: Mike Scott, Don Woods, Bud Tutmarc, Edwin Andresen, Walter Mo'okini, Kamaka Tom, Bob Brozman, Buddy Hew Len, Henri de Willigen, John Fatiaki, George Lake, and Alan Akaka. Backing up were: Jacob Kaleikini, Randy Oness, Merle Kekuku, Vic Rittenband.

Did you see Bob Brozman's name in there? That's right! One day in Paris, next day in Waikiki. That's the way his life goes. He's had far more bookings overseas in Europe than on the U.S. mainland in the past years. With that and writing books and trying to get the Tau Moe Family movie finished, that's one busy kanaka! Oh, and there's another little project he's been working on. He brought his wife Kathy and beautiful baby daughter just to meet us all, but especially to meet her Hawaiian grandpa and grandma, Tau and Rose Moe. (See elsewhere in this issue for info on Bob Brozman's just-out book "The History & Artistry of NATIONAL Resonator Instruments".) As for the Tau Moe movie, it's just short of the finish line by about \$75,000. Do any of our HSGA billionaires have any spare change?

Just a word or two about the Hawaii Calls show. If we were to spend several weeks in Oahu, we'd attend every week. It has all the old time charm and sounds so much better right there. I won't go and gush about it because you know what I'd say. But I do want to make one point. You have a choice to take either the "drinks only" section for \$10.00 or pay \$22.00 for the buffet lunch. Even though the lunch was so ono as the Hawaiians say, I heard the word "pricey" being used. Yes, compared to a lunch at McDonald's, it was. But WE are musicians, right? Who should understand if WE don't, that there were maybe a

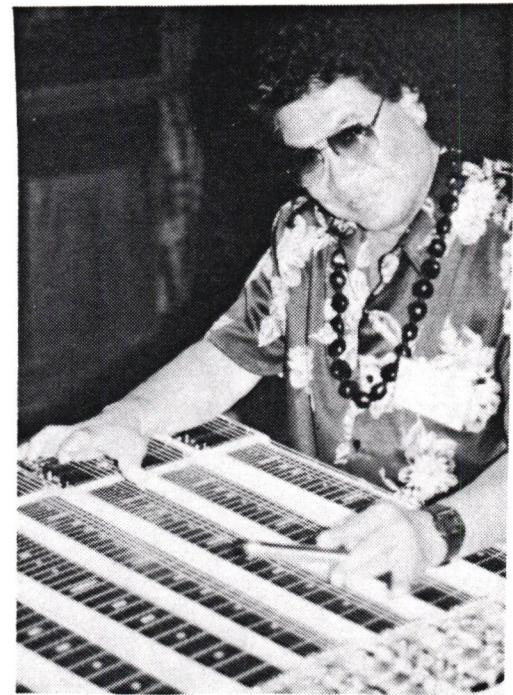
dozen people being paid to produce that show. Everyone including the blonde who held up the "applause" sign has to make a living wage doing something, and in Hawaii the cost of living is high. If we're not willing to pay to hear them play, we soon won't hear them play at all. When you're getting something for nothing, somebody else is paying for it. And, as my grandson always says "And THEN what, Granny....!?"

ON TO KAU'AI

Lovely as Oahu is, there's nothing to compare with Kaua'i. It's true we drove around and saw much hurricane damage, especially at Poipu Beach where the shoreline is just GONE and many buildings are remembered only by a cement outline on the ground. Some homes and hotels too are just a pile of debris, nothing cleared away. It's as though the owners just walked away from them never to return. BUT, there were more fortunate areas such as Wailua (where our hotel is) that weren't hit quite so hard and have been re-built. Our hotel was fresh and clean, all renewed. That's amazing, considering its large grassy lawns stretch right to the sandy beach. Perfect place to forget the crowds, and noise of Waikiki.

We all had wheels, so like a flock of teenagers we cruised the island - one day to see Waimea Canyon, next day to the end of the road past Hanalei, then on the Waialeale Boat cruise up the river to the Fern Grotto, and so on. Wherever we went, we had fun and friends to share it with. Of course the guitars and amps went along and we made our presence known wherever we could with our club T-shirts and our music. Hanalei was another place that was badly hit (by the hurricane, not by us, silly!) They have a long way to go to full recovery, if they ever get there. Not many tourists there yet, but we found a little mall with the shops open and waiting. The Duke and his Royal Fish set up the music show and soon we had tourists coming in. Some shop owners came out to meet us. They said they'd had so much sadness and stress and taken such great losses, it meant a lot to them that we brought in some happiness - no warning - no charge!

Yes, we did break into groups and play in lots of places. In the evenings we'd gather in our hotel's spacious lobby and make the good music flow again. It got so the other guests began to expect the show and when we'd come out from the dining room they'd have all the chairs occupied, sitting facing where they



Duke Ching shows off his extra long bar, which he uses to play SEVEN necks at once. He says he feels "hemmed in" with only four necks to plays.

thought our stage would be. On the last night we turned the tables on our musicians. We said it was the wives' night to rebel. After sitting in silent appreciation of the music for two weeks, it was time for THEM to show their stuff! We planned it as a party and everyone who hadn't performed as a musician (or even if they HAD) was to take part in either a talent show or a fashion show to model what they'd bought. All in fun, of course. Good idea. Should we expand on that next time?

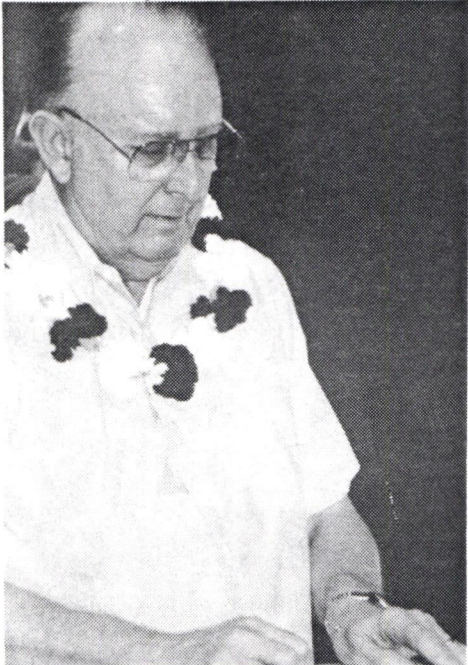
One thing I haven't figured out yet. They said the hurricane actually blew away many of the bugs that had been damaging their crops BUT the brightly colored little chickens and their flocks of chicks and the songbirds were still there.

From Lorene Ruymar

**TELL YOUR
FRIENDS
"Come out to play -
JOIN HSGA!"**



SOMEBODY SAY "BOO"!
Do Steel players EVER look up?
(Ask Herb Remington, Tom Snook
and Barney Isaacs)



DISC DATA

HERE'S WHERE TO ORDER RECORDINGS : (Most dealers also carry strings, bars, picks, sheet music, and instruction books. Ask them from price lists)

FROM HAWAI'I

Harry's Music Store 3457 Wai'ala'e Ave., Hon., HI 96816 (808) 735-2866

House of Music Ala Moana Center, 1450 Ala Moana Blvd., #1116, Hon., HI 96814 (808) 949-1051

Jelly's 835 Ke'eumoku, Hon., HI 96814 (808) 942-7771

Deals/new & used vinyl records, cassettes, CD's. Stocks old records.

FROM MAINLAND U.S.

Scotty's Music 9535 Midland Blvd., St. Louis, MO 63114 (314) 427-7794

Hana Ola Records 5518 Rincon Beach Park, Ventura, CA 93001 (805) 648-5330

FROM CANADA

Steel Guitar Canada. Al Brisco, P.O. Box 669, Streetsville, ON L5M2C2, (416) 824-8025

Linkon Guitars Wayne Link, 1549 Charleswood Rd., Winnipeg, MB R3N 1X4 (204) 895-0115

DUKE KALEOLANI CHING, STEEL GUITAR SOLOS Duke's latest recording, titled "Paradise Isle", is Duke at his finest. As nephew of Jules Ah See, Duke has a fine family reputation to live up to, and he does just that. The cost including shipping is \$10.70. Order from Duke Ching at 2637 Mirada St., Highland, CA 92346. (714) 862-8355

POSTCARDS FROM HAWAI'I

Lanakila takes you around Honolulu "from The Willows to Waikiki". Learn about historic Kawaiaha'o Church and the free Royal Hawaiian Band concerts, and other places. Introduces you to some new songs presented by top entertainers in Hawai'i. Some of the artists on this recording are: Lanakila Rittenband, Gary Aiko, Kalani Fernandes, Keith & Carmen Haugen, Nancy Gustafsson, Gene Roland, and Yvonne Perry. Steel guitar is by Denny Hemingson and Alan Akaka, with one song by Casey Olsen. Order for \$10.00 (plus \$1 mailing); CD is \$15 inc. mailing, from 1993 Kokua Records, P.O. Box 8100, Honolulu, HI 96830. (808) 923-1644

RONALD KANAHELE is the featured steel artist on the group "Anuhe'a"'s latest release, which came out in late May. Ronald is a cousin of the late

David "Feet" Rogers (Sons of Hawai'i). (He plays left-hand steel, and can be heard every Sunday 1-6 pm, at "Biggie's Nutshell" in Kailua in Windward Oahu.) Recording is available from both Harry's Music and House of Music.

STACY PHILLIPS will make recordings to assist you in learning the songs in his new steel guitar book, "The Art of Hawaiian Steel Guitar". (a copy of "Kohala March" photocopied straight from the book with Stacy's permission, appeared in the 10/91 HSGA Quarterly.) Here's what Stacy told me: "In two or three weeks you should receive a copy of a cassette of the tunes in my "Art of Hawaiian Steel Guitar". Both the publisher and I received requests for this addition. As I mention at the beginning of the tape, it is not a performance, listening recording. It is meant to give an idea of the way the Dobro tablature sounds. Most tunes are played slowly so it is easy for a learner to follow. Also, since there was too much to memorize, I recorded the pieces in short sections. It's an 85-95 minutes tape, selling at \$11 inc. postage." **STACY'S NEW ADDRESS:** 111 Pearl Av, Hamden, CT 06514. (203) 230-2067."

MIKE "MALIHINI" SCOTT has a new tape called "Hawai'i Gently Swings". Mike truly knows how to play sweet, sweet Hawaiian style. (Mike played steel in the Disney production "Life With Mikey" starring Michael J. Fox.) The tape price of US\$9.00 includes mailing. **ADDRESS:** 45-C Chestnut Park Rd., Toronto, ON, Canada M4W 1W7. (416) 922-7386.

ON THE HIGH SEAS. By vocalist Haunani Kau'i who lives in Kapa'a, Kaua'i. Her keen young steel guitarist is Greg Sardinha, who is making a very steady and positive climb to the top. He's a graduate of the Jerry Byrd School, and played in the '93 Hawaiian Steel Guitar Ho'olaule'a, in May. Try the Hawaiian record shops.

ALIKA AND CORLISS. Alika Herring, who was born in Hawai'i, spent the greatest part of his professional life on the mainland, but the true Hawaiian soul is in his music. He has that elusive "touch" we all recognize. Alika plays steel, ukulele, and some rhythm guitar. Corliss Johnston provides the rhythm back-up. Both are great! It's all pure Hawaiian and it avoids the hapa haole evergreens. Order two, you need a copy for your car. They're \$15.00 for the best 60 minutes of listening you've enjoyed in a long time. Alika Herring, 825 Mancos Place, Anaheim, CA 92806. (714) 776-5647.

Dedicated to our own
Alvin "Barney" Isaacs

Nalani

by Alvin K. Isaacs, Sr.

C6th (E.C.A.G.E.C)

①

②

Quant. Okaka

'Auhea 'oe Nalani
'Auhea wale 'oe
Heaha la no kau hana
A lilo ana 'oe ia'u

Ke huli nei Nalani
Ke huli nei ia 'oe
Heaha la no kau hana
A lilo ana 'oe ia'u

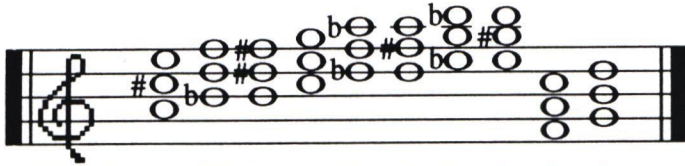
Ha'ina mai Nalani
Nalani o na lani
Heaha la no kau hana
A lilo ana 'oe ia'u

CHORDS, AS APPLIED TO THE STEEL GUITAR

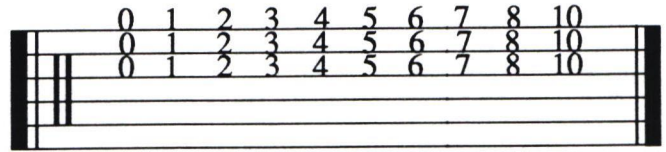
I hope you remember our discussion about intervals in the April newsletter, because chords are made up of intervals. If I were to start a beginner on steel guitar I would much prefer to start with an acoustic guitar tuned to the A major tuning, high or low bass. You will soon appreciate the great wisdom of the Hawaiians when they chose the A major tuning. It's a perfect vehicle for understanding music theory.

Tune your guitar to A major, high bass (E-C#-A-E-C#-A). Notice that at every one of the 12 frets, if you were to lay your bar straight along the fret line and pluck the top three strings (or the lower three strings if you wish) you would get a 3-note chord which is a MAJOR chord. A *chord* is a triad (three notes) or more, usually played simultaneously. Review the April newsletter for tips on intervals.

What we're talking about now is *harmony*. It's the art of combining notes (itches) in either a *consonant* or a *dissonant* way. The type of harmony our western music is based on is called *tonal harmony*. We think of *consonant* as meaning "pleasing" harmony and *dissonant* as meaning "unpleasant". Try to think instead that a *consonant* chord is "stable", reliable, and a *dissonant* chord is "unstable". Major and minor chords are consonant, diminished and augmented chords are dissonant.



Chords: A Bb B C Db D Eb E F G



Chords: A Bb B C Db D Eb E F G

Let's go back to the fretboard again, and for now we'll study it as a perfect learning-board for major chords. Most of the theory I've given you so far doesn't require memorization as long as you understand it. What you see in the illustration are ALL the major triads that exist in our western music, in all keys. There are only twelve of them. **Memorize them.** Look first at the third fret. The notes on the top three strings are C.E.G. That's a major chord. Its name is C Major. Look at the 7th fret. The notes on the top three strings are E.G#.B. It's a major chord named E Major. Look at the 6th fret, notes Eb.G.Bb, it's a major chord called Eb Major. OR, do you remember when we talked about *enharmonic* naming of notes? (P.34 October '92 issue) In other words, an Eb is played at the same fret as a D#. Two names for the same note. This triad at the 6th fret could be named D#. F##.A#, which would mean you could call that major chord a D# Major. Not very likely you'd want to do it though. At fret 9, I illustrated it as a Gb chord, but I could have called it an F# chord, naming the strings F#.A#.C# instead of Gb.Bb.Db. I chose the enharmonic name most often used.

How do you know the NAME of the major chord (triad)? In this case, it's the note on the third string that gives the chord its name. Look at the three notes of the triad on the staff above. You see them in close-stacked formation, looking very much like the three strings on the guitar. The notes are either all on lines or they're all on spaces of the staff. The bottom note when they're stacked neatly that way, is called the *root* or the *tonic* note of the triad and it gives its name to the chord.

How do you know it's a MAJOR chord (triad) rather than minor or something else? All major triads have the same interval set-up. The second note (middle note) of the triad is an interval of a *major third* above the tonic note. The top note is an interval of a *perfect fifth* above the tonic note, AND the top note is an interval of a *minor third* above the middle note. If you want to look at the construction of these triads from the point of view of their position on the major scale, you might have to go back to P.32 in the July '92 issue to review scales. Taking the C chord at fret 3 as an example, its notes C.E.G. are the first, third, and fifth notes (tones) on the C scale. If you want to check out the three notes of the G chord (triad), you would have to look at the G scale (not the C scale) to find that the notes of the G chord G.B.D. are the *first, third* and *fifth* tones of the scale.

You say, "Can't I be a musician without having to LEARN all that?" Obviously you can, just as you can drive a car without knowing what's under the hood. But there will be many times when you'll secretly wish you did know, especially when you can't sit in with a recording group because you can't read the score, or you can't write out an arrangement because you have it in your head but you don't know how to put it on paper.

OK, for your assignment this time, just memorize the names of the notes in those eleven major chords, don't bother memorizing anything else I've said. If I ask you in the October newsletter to name the notes of the Bb Major chord, you'll fire back, "Bb. D. F !!" and name the A Major chord "A. C#. E !!" and so on. Good kid! And if I say, "Name the notes in the Gb chord", you'll notice I didn't say "Gb Major chord", I just called it the Gb chord. That's an understanding that if it's a minor or a diminished or whatever chord you have to say so, but if you don't say what the chord is, we understand it to be Major. That's because later on we'll start talking about Major 7th chords and we'll be referring to something else (the Major 7th interval, to be exact) and the two Majors will confuse each other and US. Enough for now. **Memorize!**

WHERE THEY'RE PLAYING

VIC & NANCY RITTENBAND now play not one but three nights from 5:00-7:00 pm at the Outrigger East, 150 Ka'iulani Ave., in the Aloha Bar. For info phone their home, 923-1644 or the bar 922-5353. Club members are invited to bring their steel guitar and "sit in".

KCCN BROADCAST & LUNCH Fridays from 12:00-1:00 at the Beachcomber Hotel. Always an entertaining personality, guest artist to make the show a special event. Reservations needed, but you can pay at the door. 922-4646

OWANA SALAZAR plays Monday and Tuesdays 3:30 to 7:00pm at Harry's Bar in the Hyatt Regency, right by the big waterfall. When Owana's group takes a break, an excellent group of Tahitian dancers and drummers takes over. Don't know if that's permanent, but we're glad we saw them.

CASEY OLSEN has formed his own group of young musicians on ukulele, bass, rhythm guitar and steel. For awhile they played twice a week at the Ilikai, but I believe that booking has now run

out. He still plays with his dad, Hiram, and Kalani Fernandes in the Hiram Olsen Trio. His young group is just a sideline. Jerry turned out to hear them and gave his full approval.

UKULELE VIRTUOSO HERB OHTA SAN: Queen Kapi'olani Hotel, in the Peacock dining room. He's there on weekends when the Hawaiian buffet is served, and he plays in a trio with bass and vibes. His extraordinarily great ukulele work is very well amplified.

23RD ANNUAL 'UKULELE FESTIVAL July 25th at Queen Kapi'olani Park Bandstand at 11:00 am. Admission free

11TH ANNUAL KA HIMENI ANA (OLD FASHIONED SINGING) takes place on August 13 and 14th at the Orvis Auditorium, University of Hawai'i, Manoa campus, Dole Street and University Ave., Honolulu. It's for unamplified pre-World War II Hawaiian music, a competition open to all amateur or professional groups. The only exception to the "unamplified" rule

is steel guitar. Steel guitar players should get involved. For more info call Marge Hansen (808) 842-1133.

11TH ANNUAL GABBY PAHINUI-LELAND ATTA ISAACS SLACK KEY CONCERT August 15th, Kaka'ako Waterfront Amphitheater, Honolulu. Sponsored by the Dept. of Parks and Recreation in Honolulu. Starts 12 noon. Free adm. (808) 239-4336

KAPALAKIKO HAWAIIAN BAND will perform for one week in Honolulu in August. This very Hawaiian band is based in San Francisco, but they're all Hawaiian-born: Saichi Kawahara on rhythm guitar, Keith Cockett on bass, and Dwight Tokumoto on steel guitar and slack key. Don't fail to hear them. They're extra good.

JOHN AUNA, DUKE CHING AND BERNIE ENDAYA will be featured guest artists Sept. 11-12 at the Ft. Smith, Arkansas "Ho'olaule'a 1993-Steel Guitar Presentation" Boen Guitar Co. puts it on at Day's Inn Convention Center. Also C&W steel guitar artists. Contact: Jim Boen (918) 626-3828. **ASAP FOR HOTEL ROOMS** to (501) 783-0271. HSGA's: \$27-\$30 nite.

THE LAST WORD

Report from Marjorie Scott, Editor

CREDITS & EDITS

"Start-up", for any of you who regularly produce any kind of product, takes time to the MAX. Both Alan and I collaborated on the production and formatting of this issue. Hope you like the result. **APPLAUSE PLEASE!** Many mahalos to Lorene Ruymar, this first-of-many issues. Without the written portions by your "Editor Emeritus" (gee, that sounds good), the July-August Quarterly would be in your hands even later than I think it's going to be. Lorene's columns will continue (if she can be persuaded). As for Clay Savage — here's a man of real Hawaiian-style kokua. YOU know what a cheerful and willing guy he is, when it comes to taking pictures for HSGA Quarterly; I just found out! All the pictures (and more) in this issue are Clay's contributions. As soon as we have a breather, I'll send prints we didn't use to people pictured, for their own scrapbooks. Heartfelt "thanks" from both Alan and me.

NEW STUFF From now on, unless we miss one here and there, you'll find all

authentic Hawaiian words (except proper and place names) written in italics. It's now mandated in State and City government, and used in schools, here in Hawai'i. You'll also find glottals ('ukina) that look like this "'' where they belong, in Hawaiian words, so people remember to pronounce the extra vowel separately (even if it's spoken so fast it sounds like a glitch in your throat). Since we live here, (and even I have been here long enough to be a *kama'aina*) could we do less? Some column names are already changed. More to come, maybe. YOUR suggestions are welcomed, and urged.

"REPORTER'S FACT SHEET" (RFS) AVAILABLE Many of you who came to Honolulu in May got HSGA's new RFS. PLEASE use it for ANY fact or fancy you'd like printed in your Quarterly. It's a useful tool for me to sort and place your material in the proper place, and give you credit. It's also VERY useful for YOU, especially if you don't fancy yourself a "writer", but want news about a person, event, instrument/ "whatevah" to be in print for others to know about. Just the facts,

man. We're happy to do the writing, if you don't want to. **BUT PLEASE TYPE OR PRINT.** My ears are good at accents (*Rechtig, Herr Barton?*) but my tri-focal eyes have it rough with even Alan's handwriting.

WANTED: AREA EDITORS That's newspaper lingo for YOU, out there, who want to be HSGA's Regional Editors for news and events from several states, or a "stringer" who regularly submits people, places, calendar events to a Regional Editor. If you WANT to write up everybody's "doings", I'll love it. However, I'll be quite ecstatic if you simply want to COLLECT all the information, add your "close up and friendly" opinion/viewpoint, and mail your Region's events, etal by issue deadline. Are you listening New Zealand? Germany? Canada? East Coast? No Cal and Low Cal? (That's Northern California and Southern California, in case you don't read Herb Caen.) YES! You absolutely need a RFS to do this. The more steel guitar player and performance news we get, the better your Quarterly is going to read. (Also, I get to keep my job.)

HSGA STEEL "ROGUES"



...AT THE AKALA ROOM
Do you get the feeling that Jerry Byrd never left the stage at the Queen Kapiolani in Honolulu? Look again. Three different shirts! Alan, Barney and Kobayashi-san played on, despite all. (Just joshin', Jerry.)



(All photos in this issue courtesy of Clay & Lois Savage)

GUITAR GALLERY"

...AT THE '93 HO'OLAULE'A
A new generation of Hawaiian steel
guitar stars seen in our "heaven":
Owana Salazar, Greg Sardinha, and
almost-ready-to shine Nephi
Brown. More! More!



E KOMO MAI! Welcome! New Members

LEIMOMI AGRABANTE, 275 Hanakapiai St., Honolulu, HI 96825

ALAN BRANDEL, 829 Votaw Rd, Apopka, FL 32703

JIM GRAY, RD 2, P.O. Box 257-B, New Brighton, PA 15066

ROBERT M. JONES, 1829 Kenora Drive, Escondido, CA 92027

FRED LUNT, 2019 Ualaka 'a St., Honolulu, HI 96822

NICK MANISCALCO, 1753 Burnet St., El Cajon, CA 92021-3127

RENA KALEHUA NELSON, KPFA-FM,

1929 M.L.King Jr. Way, Berkeley, CA 94704

CECIL PAYNE, 70 MACASSA AVE APT 16A

Hamilton, ON L8V 2A8 CANADA

WILLIAM SCIPIONI, 50 Hidden Valley Road,

Rochester, NY 14624-2301

ALVIN SYDNOR, 806 Meetinghouse Road,

Boothwyn, PA 19061-3504

TETS USHIJIMA, 1551 Ainakoa Av., Honolulu, HI 96821

JEFF WATSON, P.O. Box 5201, Lahaina, HI 96761

ADDRESS CHANGES:

ALAN AKAKA, HSGA, P.O. Box 11373, Honolulu, HI 96828-1373

BARBARA BOLTON, 1021 Smith St., #409, Honolulu, HI 96817-

5158

ETHEL EVA HANSEN, 1387 W. 920 S. St., George, UT 84770-

4409

AL KEALOHA, 66-818 Keakula St., Waialua, HI, 96791-9741

STACY PHILLIPS, 111 Pearl Av., Hamden, CT 06514

IAN UFTON, Box 44008, 370 Main St.,

N, Brampton, ON L6V 4H5, Canada

ROSE K. VOGT, 4685-33rd St., San Diego, CA 92116-3313

NAME CHANGES:

MARGO SHY+Wedding Bells=MARGO KLUNDT

CLOSING NOTES

FRANK McPHALEN passed away on March 26th. His heart had been very bad for a long time so it was no surprise. He lived long enough to see the write-up about him in the April 1993 newsletter on page 19. All the local steel guitar players went back to the old Tahiti Hut in Vancouver (now converted to a Chinese restaurant) and made it Hawaiian again for one evening. We dedicated the night of music to Frank because he so loved to join us whenever he could in the days when we played there regularly. Alec Kabool, a lifetime friend of Frank's, said the words for us. (*Lorene Ruymar*)

HSGA QUARTERLY

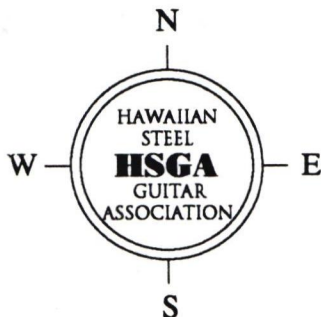
The Hawaiian Steel Guitar Association

P.O. Box 11373, Honolulu, HI 96828-1373

FORWARDING AND RETURN

POSTAGE GUARANTEED

ADDRESS CORRECTION REQUESTED



July/August 1993

IN THIS ISSUE

- Honolulu Convention Re-caps
- Up-coming Conventions
- NEW: Members Column
- Music & Techniques
- All your favorite columns

Bulk Rate
U.S Postage
PAID
Honolulu, HI
PERMIT #9129

THIS IS YOUR FINAL ISSUE, IF YOU HAVEN'T RENEWED HSGA MEMBERSHIP FOR 1993-94